

E

SMITH® JAY R. SMITH MFG. CO.®
 MEMBER OF MORRIS GROUP INTERNATIONAL
 POST OFFICE BOX 3237
 MONTGOMERY, ALABAMA 36109-0237 (USA)
 TEL: 334-277-8520 FAX: 334-272-7396 www.jrsmith.com

ASPE MEMBER OF: **PD** **ASSE**

LOCATION

DRAWING NUMBER
S1510

SIZE
A

SCALE:
NONE

DATE:
1-14-85

APPROVED BY:
SB

CHECKED BY:
SB

DRAWN BY:
PL

1510, 1520, 1530, 1540

FIGURE NUMBER

WE CAN ASSUME NO RESPONSIBILITY FOR USE OF SUPERSEDED OR VOID DATA

DIMENSIONS ARE SUBJECT TO MANUFACTURERS TOLERANCE AND CHANGE WITHOUT NOTICE

SCUPPER DRAINS

FUNCTION: Used at junction of roof and parapet. Side outlet (90°) drains may be connected to outside downspout by using drain in conjunction with Fig. 1550 downspout adaptor. When connecting to an inside leader, the 45° outlet drains may be easily offset into the wall. The flush grate prevents obstruction to traffic. The angle grate prevents debris from blocking drainage.

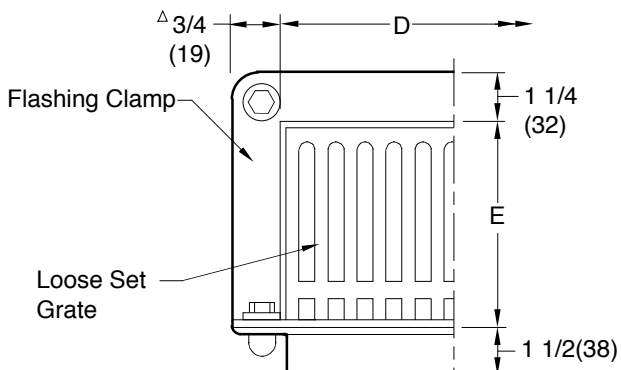
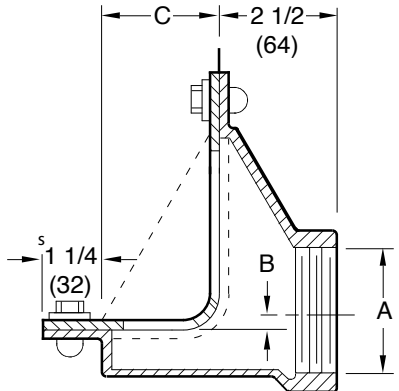


Fig. 1520 Shown



90° THREADED OUTLET
 Fig. 1510T ANGLE GRATE
 Fig. 1520T FLUSH GRATE

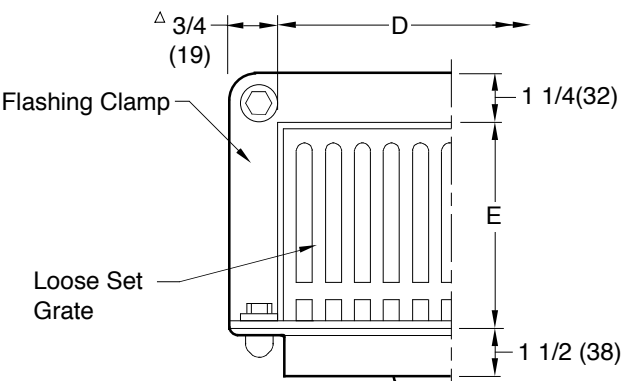
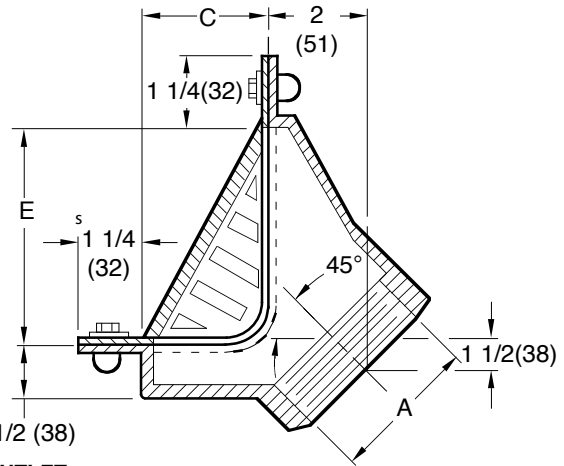


Fig. 1530 Shown



45° THREADED OUTLET
 Fig. 1530T ANGLE GRATE
 Fig. 1540T FLUSH GRATE

A SIZE	B	C	D	E	FREE AREA	
					ANGLE	FLUSH
02(50)	*			5	17.75	20
03(75)	1/4(6)	3 1/4 (83)	8 3/4 (220)	5 (125)	SQ IN (115)	SQ IN (129)
04(100)	1(25)					
05(125)	1 3/4(44)	4 1/4 (110)	10 1/2 (265)	6 1/2 (165)	35SQ IN (226)	40 SQ IN (258)
06(150)	1 3/4(44)	(110)	(265)	(165)		

* 02"(50) Size 1510/1520 "B" Dimension is 1/4"(6) Below Flange, Not Above as Shown.
 Δ For 05(125) & 06"(150) size add 1/2(13)".
 s For 05(125) & 06"(150) size reduce by 3/16(5)".

REGULARLY FURNISHED:

Duco Cast Iron Body, Flashing Clamp and Loose Set Grate. Type of Outlet and Grate as indicated by Figure Number Selected.

VARIATIONS:

- Downspout Adaptor (Specify Fig. 1550)
- Secured Grate -SEC
- Secured Grate with Vandal Proof Screws -U

OPTIONAL MATERIALS:

- Galvanized Cast Iron -G
- Nickel Bronze Face -NB
- Polished Bronze Face -PB
- Rough Bronze Face -RB
- Stainless Steel (Specify Fig. 9785)

NOTE: Dimensions shown in parentheses are in millimeters.

E	11/23/09	Secured Grate was -SG Revised Millimeters Added Millimeters	JJ	CL	WEIGHT POUNDS	VOLUME CUBIC FEET	FIGURE NUMBER 1510, 1520, 1530, 1540
D	6-16-99		CMD	BS			
C	7-1-96		CMD	BS			
REV.	DATE	DESCRIPTION	BY	CKD. BY			